

1942
NORTHERN PACIFIC RAILWAY COMPANY **1942**
AUTHORITY FOR EXPENDITURE
YEAR **1942**

SUPERINTENDENT'S NO.
RFA (19)

1942

DEPT. NO.
ENGINEERING DEPT. NO. 121

A. F. E. NO. **456**

Tacoma Div. Lake Wash. Belt L&N DISTRICT STATE Wash. VAL. SEC. NO. 8-A

AUTHORITY IS REQUESTED FOR A NET EXPENDITURE OF \$ 1670

Accounting distribution as follows: (Distribution to be made in General Office.)

	Operating Expenses	Profit and Loss	Net Operating Expenses	Net Profit and Loss
Cost of property retired	\$ 80			
Value of salvage	30		50	
Incidental costs			35	
Total to Operating Expenses				\$ 85
Total to Profit and Loss				
To Material and Supplies				30
To Bills for Collection				5965
To Other Accounts				
Net charge to investment account—Additions and betterments				1585
Total of distribution				\$ 5665

*Original Cost Adjustment
Made in 12-31-1942*

Budget reference: Budget Item 197

Class of Works No. 10

Joint facility contract reference: Not Joint Account

The location is partly on this company's property. To secure rights, it will be necessary

NECESSITY CERTIFICATE
SEP 18 1942
Applied for SEP 18 1942
Date NOV 10 1942

Location: Kirkland (Periton)

Title: Siding for Lake Washington Shipyards

Reason: The Lake Washington Shipyards, located on the lake front at Houghton, are receiving large quantities of material by rail and have purchased a tract of ground adjacent to the Belt Line and will store thereon the material as received, trucking it to the lake front as required.

In order to furnish this industry with trackage from which to handle this material it is recommended that a siding 1240.5 ft. long be constructed, the Railway Co. installing the turnouts to the clearance point at each end at its expense and the remainder of the track between clearance points at the expense of the industry.

This firm has a contract for the building of 24 ships and part of the material for 8 of the ships is now in transit. Freight for the next 12 months should run not less than \$40,000 per month and N.P.Ry. gross revenue should run about \$30,000 per month.

This is a defense project and informal authority for the construction of the siding was granted by the Vice President May 30, 1942.

ENTERED
Office
RAB
1942

Work to be done by company force under charge of Div. Supt.

Accounting to concentrate in the office of District Accountant - Tacoma

Signature and Title: AFE Section Date: 6-12-42 19

APPROVED:		
General Superintendent	JUN 17 1942	General Manager
Chief Engineer		Vice President
Chief Engineer	C. E. Denney	President

COMPTROLLER'S RECORD OF NOTICE OF APPROVAL AND OF COMPLETION

PA OREGON DIVISION

NORTH PACIFIC RAILWAY COMPANY

KIRKLAND (Veriton)

LAKE WASH. RAIL LINK

STATE OF WASHINGTON

VAL. SEC. No. 8-A

Estimate of cost of service track for Lake Washington Shipyards per sketch dated May 13, 1942.

By Ry. Co. at its expense - 2 No. 9 turnouts H. 1. to 116' clearance point at each end	230.0 tri. ft.
By Ry. Co. at expense of industry - between clearance points	1010.5 "
Total length of proposed siding	<u>1240.5</u> "

Part 1 - By Railway Co. at its expense - 2 No. 9 turnouts - 230 ft.

ADDITIONS AND DEDUCTIONS

Grading	60	
Two No. 9 - 80g turnouts each complete with 116 ft. of 80g track using treated ties, 3rd class rail, ballast, etc.	330	1205
Use of tools, taxes, etc.	40	
Engineering	40	
	<u>450</u>	<u>1205</u>
		460
		<u>1665</u>

OPERATING EXPENSE

Remove cross ties from main track for 2 new turnouts	30	
Engineering and incidentals	5	
	<u>35</u>	

SALVAGE

30

N.E.T. AMOUNT

80

- - -

Part 2 - By Railway Co. at expense of industry - 1010.5 ft. of track

FOR WORK (Bills for Collection vs Lake Washington Shipyards)

Grading	400	
Culverts - 24" R.C.P. 132 lin. ft.	281	298
Cross ties - treated - 500 pcs.		800
Mail 90% 3rd class 2021 lin. ft. 21.07 CT FOB site		541
Angle bars 90% 3rd class		94
Track bolts and nutlocks - 272 pcs. each		41
Track spikes - 7 kegs		46
Tie plates 90% 3rd class 1000 pcs.		152
Ballast - pit-run gravel - 250 cu. yds. FOB site		183
Lay, line, surface 1010 ft. of track	503	
Place ballast - 250 cu. yds.	125	
Place tie plates	36	
Handle rail etc.	14	
Flag crossing	15	20
Engineering	112	
Taxes on labor	94	
Fraight, rentals, etc.		117
	<u>1330</u>	<u>2275</u>
		1330
		<u>3605</u>
		360
		<u>3965</u>

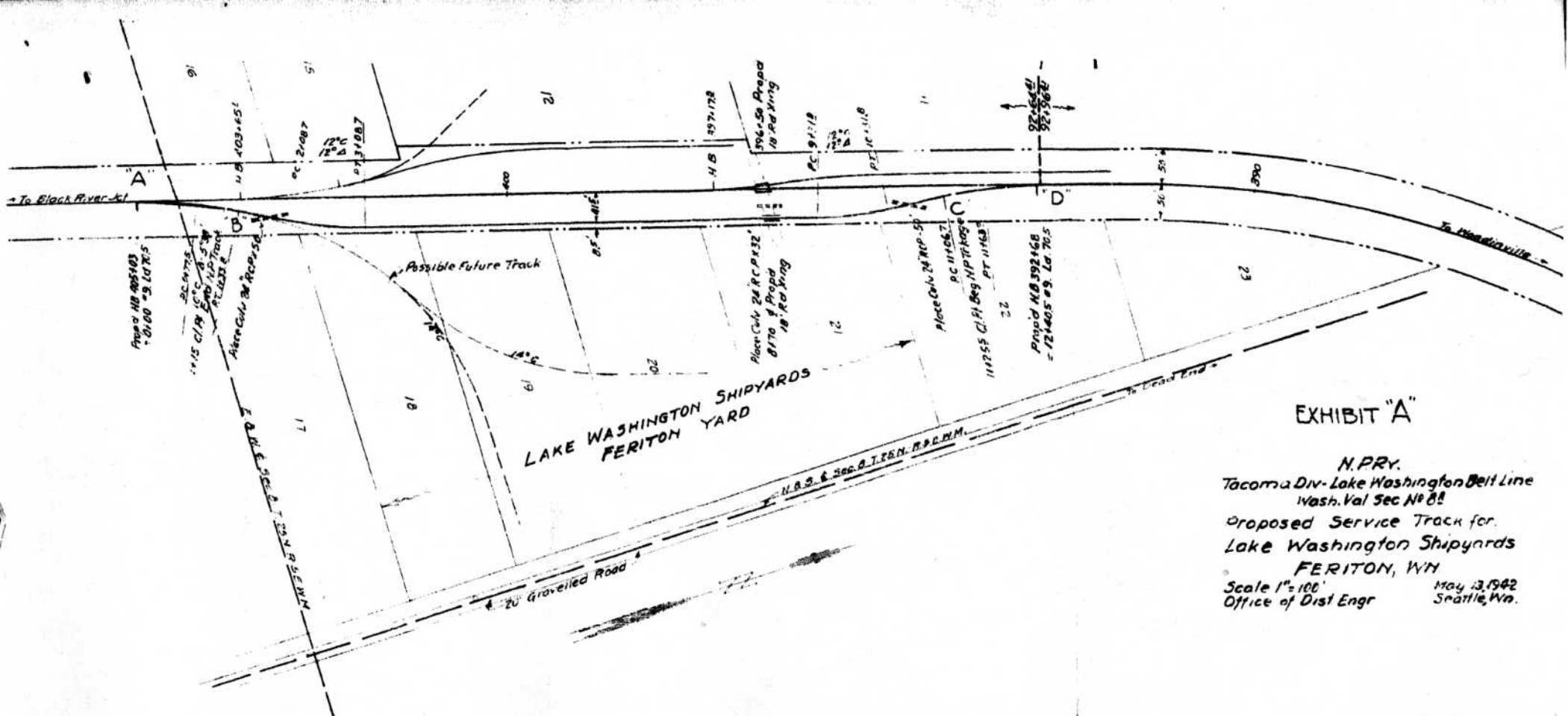
10% supervision, store expense, etc.

S U M M A R Y

A & B - By Railway Co. at its expense	1665	
Inc. O. E. - By Railway Co. at its expense	35	
New work - By Railway Co. at expense of industry B/C	<u>1985</u>	5665
Less value of salvage	30	
Less B/C vs industry	<u>3985</u>	
Net amount - Cost to Railway Co.		<u>3985</u> <u>1670</u>

Net Joint Account

Office of Chief Engineer
Estimate #461
June 12, 1942



LAKE WASHINGTON SHIPYARDS
FERITON YARD

EXHIBIT "A"

N. P. R. Y.
Tacoma Div. Lake Washington Belt Line
Wash. Val Sec No 88
Proposed Service Track for
Lake Washington Shipyards
FERITON, Wn
Scale 1"=100'
Office of Dist Engr
May 13, 1942
Seattle, Wn.

North Pacific Railway Co.

Accounting Department

A. F. N. No.	456	15	40
--------------	-----	----	----

to: Supt.,
Tacona, Wash.

St. Paul, Minn., June 26, 1912

Originator No. RFA No. 63
Chief Engineer's No. 121

Identified but your requisition for a special appropriation (Chief Engineer's No. 121) showing improvements, viz: Siding for Lake Washington Shipyards - (Tacona), Wash.

to: Supt., Tacona, Wash.	June 25,	1912, in the sum of \$ 5665.00
		\$ 55.00
to: Supplies		\$ 30.00
to: Collection		\$ 3965.00
		\$
		\$ 585.00

to: Divn. Forces
to: Division of Divn. Supt.
to: Kirkland (Periton) - Siding for Lake Washington Shipyards
to: Tacona Dist. Alet - Tacona
to: S-A Wash. Shop - 40
to: Additional Yard Tracks, Sidings & Industry Tracks
Budget Item 197.

The cost of the two turnouts will be borne by the railway.
The cost of the track between the two turnouts estimated at \$3,965.00 to be borne by the industry and charge should be made to Bills for Collection.
Original Cost Adjustment will be made by Auditor Disturbances.

[Handwritten Signature]
GENERAL AUDITOR

[Handwritten Signature]
Chief Engineer

When writing to our General Office the A. F. N. number must be given in every instance.



N.P. 1926

Tacoma, Wash. Sept. 10, 1942

District Engineer,
Record Engineer,
Auditor Disbursements.

A. F. E. No. 422- 1942

The project covered by the above A.F.E. number entitled

Kirkland (Parsons) - Dredging for Lake Washington - was reported phy-
sic Shipyard.
sically completed on July, 11, 1942.

Retirement ^{is} ~~was~~ involved.

Copy: Asst. Engineer
E. R. Adams.

H. S. Hansen,
District Accountant.

Work started July, 1942.

Completion report should be expedited amount
Bills for Collection involved.