



NORTHERN PACIFIC RAILWAY COMPANY  
**1964** AUTHORITY FOR EXPENDITURE **1964** YEAR **1964**

SUPERINTENDENT R. F. A.  
 NO.

DEPT. No.  
 ENGINEERING DEPT. No. 25

A. F. E. NO. **171**

Tacoma Div. Lake Washington Belt Line DISTRICT STATE Wash. VAL. SEC. No. 8-A

AUTHORITY IS REQUESTED FOR A NET EXPENDITURE OF \$ -

Accounting distribution as follows: (Distribution to be made in General Office.)

	Operating Expenses	Net Operating Expenses
Cost of property retired.....\$		
Value of salvage .....		
Incidental costs .....		
Total to Operating Expenses .....		
Total to Accrued Depreciation .....	Original Cost Adjustment	
To Material and Supplies .....	Made in Feb. 19 1964	
To Bills for Collection .....		3,090
To Other Accounts .....		
Net charge to investment account—Additions and Betterments .....		
Total of distribution .....		\$ 3,090

Budget reference: Not in Budget Class of Work: No. 7

Joint facility contract reference: Not Joint Account

The location is - on this company's property. To secure rights, it will be necessary

Location: Kirkland (near)

Title Construct Overhead Highway Bridge

and

Reason: The State of Washington proposes to construct a new bridge to carry its Secondary Highway No. 2-D over the Lake Washington Belt Line track at MP 17+1780.

Agreement dated February 19, 1964 provides for the Railway Company carrying out certain incidental work in connection with the project.

All costs are to be borne by the State of Washington.

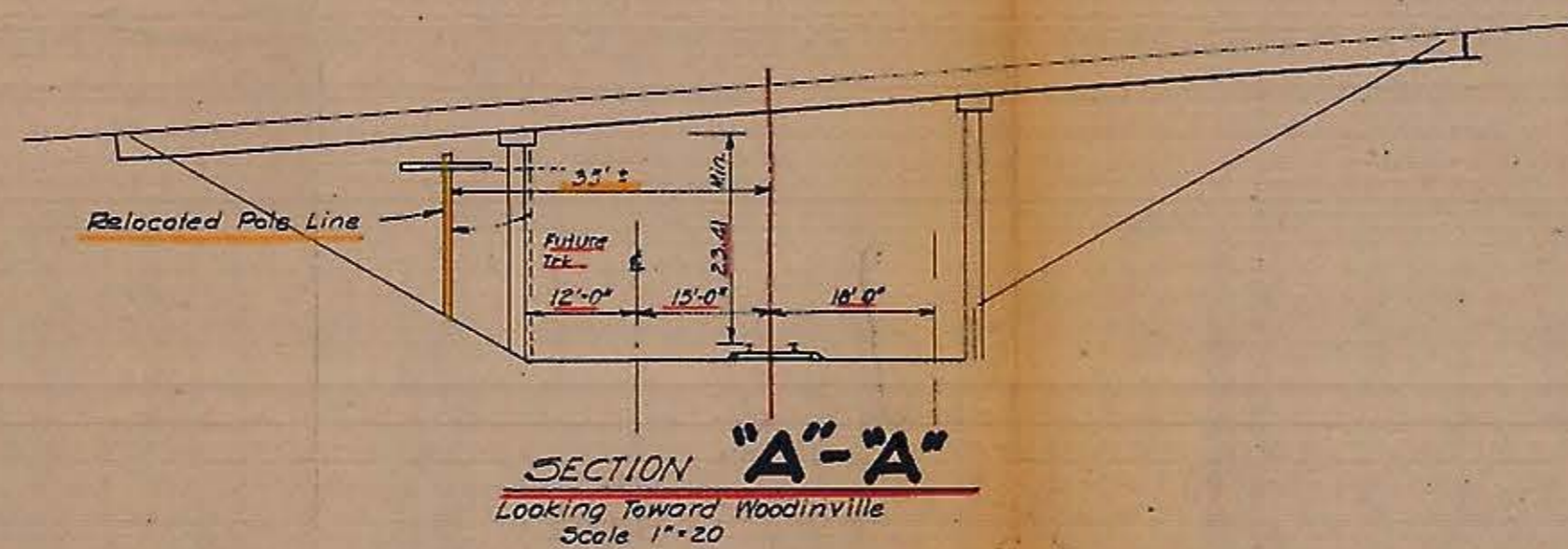
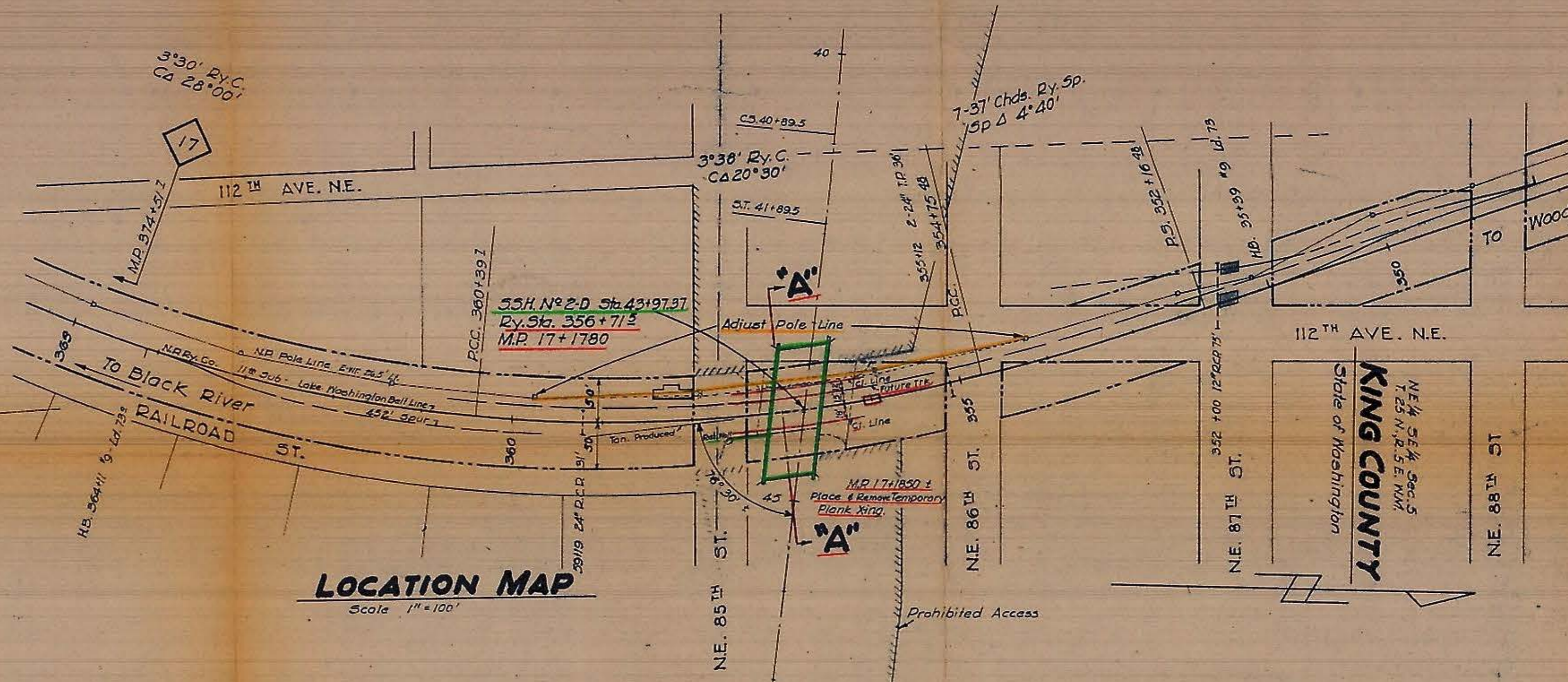
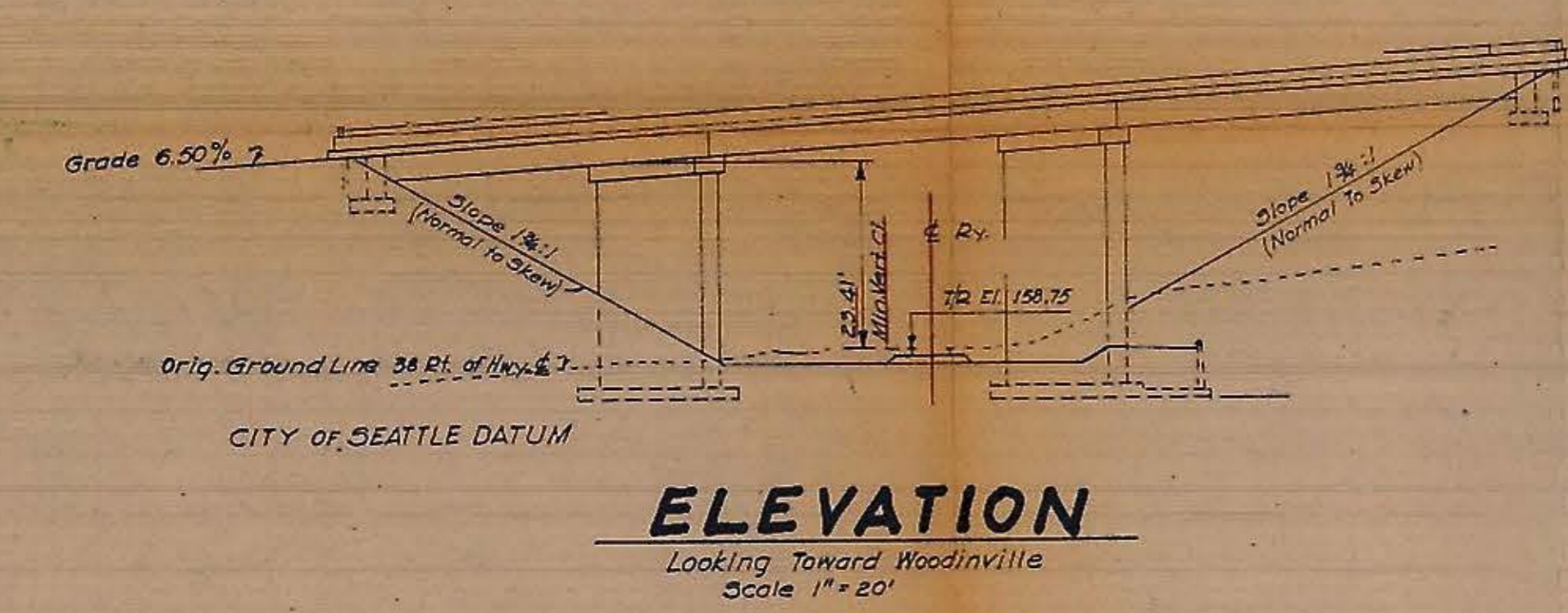
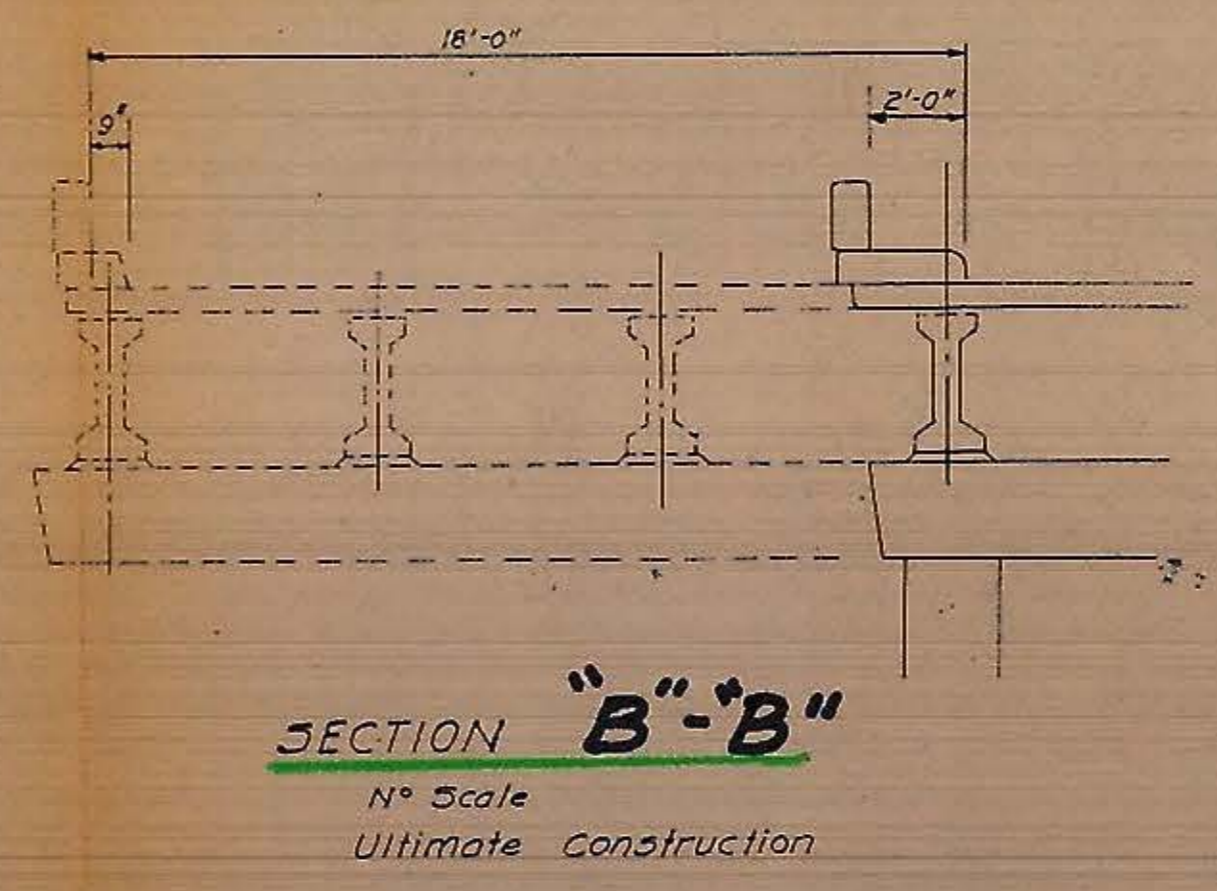
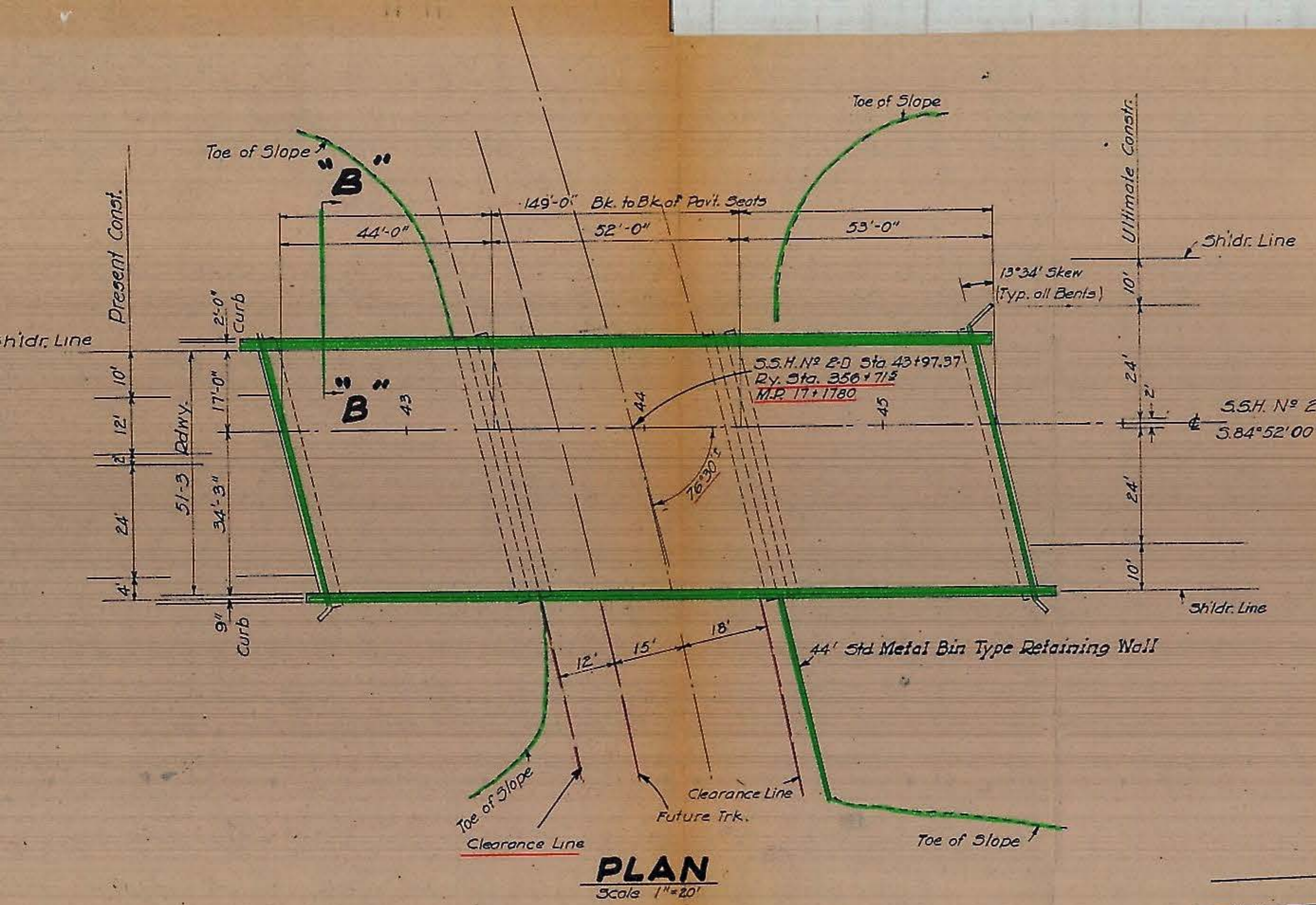


Work to be done by company force under charge of Division Superintendent

Accounting to concentrate in the office of District Accountant, Tacoma

Signature and Title: *Melwolf* Valuation Engineer Date Feb. 24 19 64

APPROVED: *Melwolf* *M. O. Walden* *N. M. Jorgensen*



**EXHIBIT "A"**  
 N.P. Ry. Co.  
 Tacoma Div. - Lake Washington Bell Line - 11th Sub.  
 Wash. Val. Sec'n. No. 8-A  
**KIRKLAND, WASH.**  
 Work In Connection With S.S.H. No 2-D-Overhead Cross  
 Kirkland To Jct. P.S.H. No 1-RE M.P. 17+1780

Office of District Engr. Seattle, Wash.  
 Scale As Shown November 18, 1963  
 Revised: January 30, 1964  
 A.C.E. 179-3