



N. P. 1363
1-48

COMPTROLLER'S COPY

NORTHERN PACIFIC RAILWAY COMPANY

1964

AUTHORITY FOR EXPENDITURE

1964

YEAR 1964

SUPERINTENDENT *[Redacted]* F. A.
No.

DEPT. No.

ENGINEERING DEPT. No. 91

A. F. E. NO. 500

Tacoma

Div. Belt Line

DISTRICT
BRANCH STATE

Wash.

VAL. SEC. No. 8A

AUTHORITY IS REQUESTED FOR A NET EXPENDITURE OF \$ 4,063

Accounting distribution as follows: (Distribution to be made in General Office.)

	Operating Expenses	Net Operating Expenses
Cost of property retired	30	
Value of salvags	3	27
Incidental costs		50
Total to Operating Expenses		77
Total to Accrued Depreciation		
To Material and Supplies		5
To Bills for Collection		4,064
To Other Accounts		
Net charge to investment account—Additions and Betterments		3,986
Total of distribution		8,132

Budget reference: Not in Budget

Class of Work: No. 8

Joint facility contract reference: *A.X.* Not Joint Account

The location is - on this company's property. To secure rights, it will be necessary

Location: Kirkland (near)

Title: Install Flashing Light Crossing Signals.

and

Reason: Agreement dated September 25, 1964 between King County, Washington and the N.P. Railway covers the installation of automatic flashing light crossing signals at MP 20+1918 where 132nd Avenue N.E. crosses the N.P. Belt Line tracks.

The Agreement provides for the installation of the signals by the Railway Co. with the cost to be borne 50% by the Railway and 50% by King County.



Work to be done by company force under charge of *[Signature]*

Signal Engineer

Accounting to concentrate in the office of *[Signature]*

District Accountant, Tacoma

Signature and Title: *[Signature]*

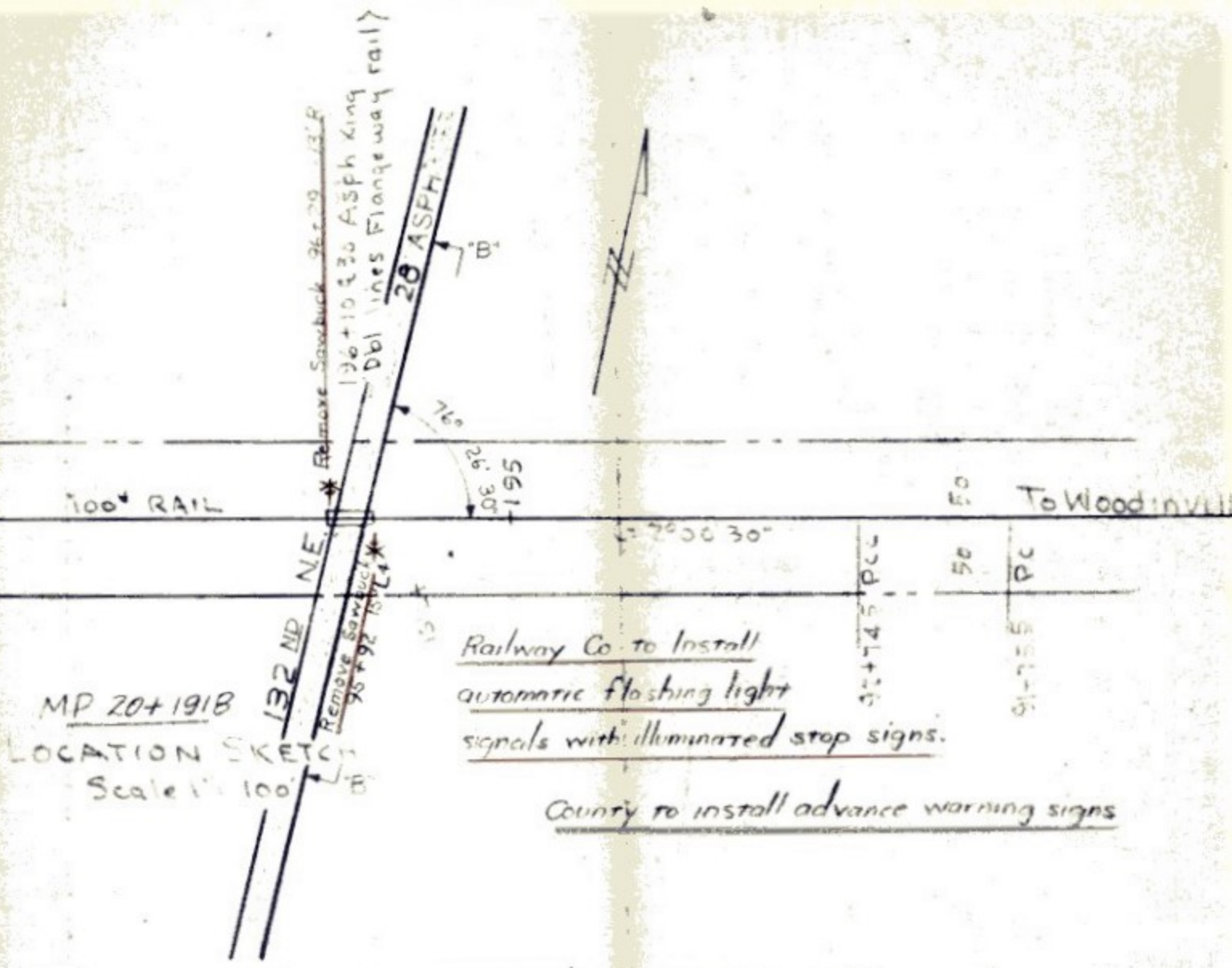
Valuation Engineer

Date Oct. 20, 1964

APPROVED:

[Signature: A. J. Hendry]

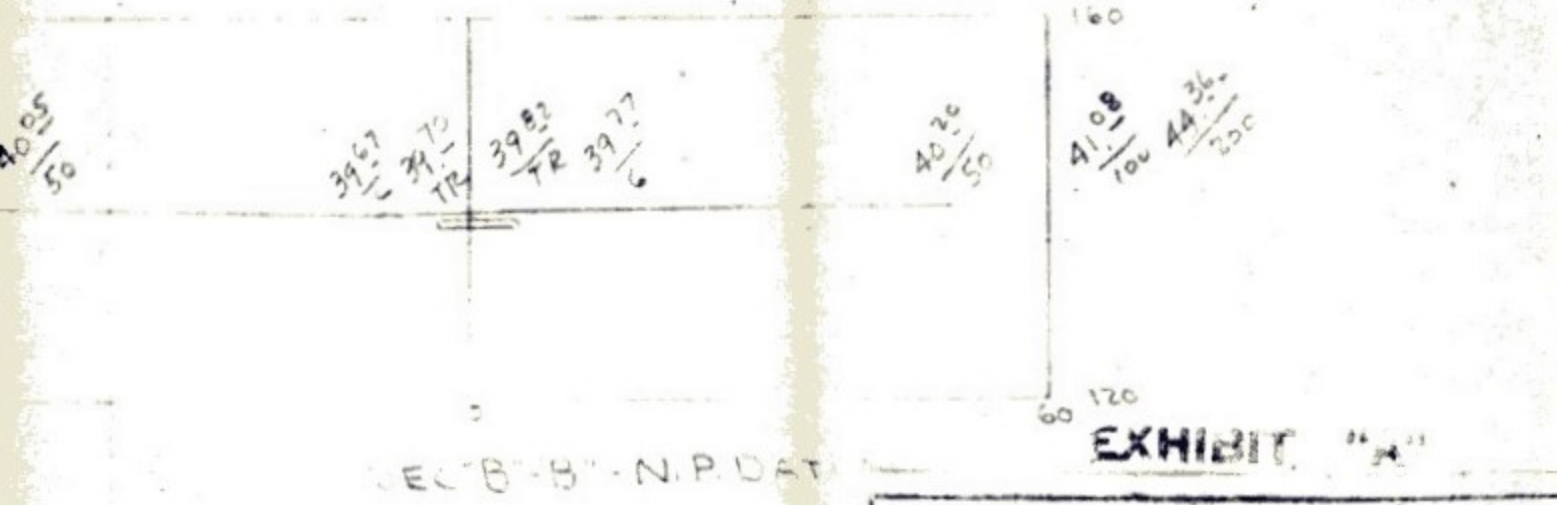
[Signature: R. J. ...]



MP 20+1918
 LOCATION SKETCH
 Scale 1" = 100'

Railway Co. to install
 automatic flashing light
 signals with illuminated stop signs.

Country to install advance warning signs



N. P. RY. CO.
 TACOMA DIVN 11th SUBDIVISION
 WASH. VAL. SECN No. 8A

KIRKLAND (nr)
 Proposed Signal Protection
 at M.P. 20+1918