

N. P. 1363  
1-49

COMPTROLLER'S COPY

## NORTHERN PACIFIC RAILWAY COMPANY

1965

AUTHORITY FOR EXPENDITURE

1965

YEAR 1965

SUPERINTENDENT'S R. F. A.

DEPT. No.

No.

ENGINEERING DEPT. No. 71

A. F. E. NO. 355

Tacoma

Div. Belt Line

DISTRICT  
BRANCH STATE Wash.

VAL. SEC. No. 8-A

AUTHORITY IS REQUESTED FOR A NET EXPENDITURE OF \$ 406

Accounting distribution as follows: (Distribution to be made in General Office.)

|   | Operating Expenses | Net Operating Expenses |       |
|---|--------------------|------------------------|-------|
| Cost of property retired.....                                     | \$                 |                        |       |
| Value of salvage .....  |                    |                        |       |
| Incidental costs .....  |                    | 406                    |       |
| Total to Operating Expenses .....                                 |                    |                        | 406   |
| Total to Accrued Depreciation .....                               |                    |                        |       |
| To Material and Supplies.....                                     |                    |                        | 5     |
| To Bills for Collection .....                                     |                    |                        | 7,721 |
| To Other Accounts .....   |                    |                        |       |
| Net charge to investment account--Additions and Betterments ..... |                    |                        |       |
| Total of distribution .....                                       |                    |                        | 8,132 |

Budget reference: Not in Budget

Class of Work: No. 8

Joint facility contract reference: Not Joint Account

The location is - on this company's property. To secure rights, it will be necessary

Location: Kirkland (near)

Title Install Automatic Flashing Light Crossing Signals.

and

Reason: Agreement dated June 28, 1965, Docket No. 25188, between the Northern Pacific Railway, the State of Washington and King County provides for the installation of automatic crossing signals at the intersection of Northeast 124th St. and the NP's Eleventh Subdivision track at MP 19+4165 near Kirkland, Washington.

The signals will be installed on the basis of the Railway Co. performing the work with the State bearing 90% of the cost and the County and Railway Co. each bearing 5%.



Work to be done by company force under charge of

Signal Engineer

Accounting to concentrate in the office of

District Accountant, Tacoma

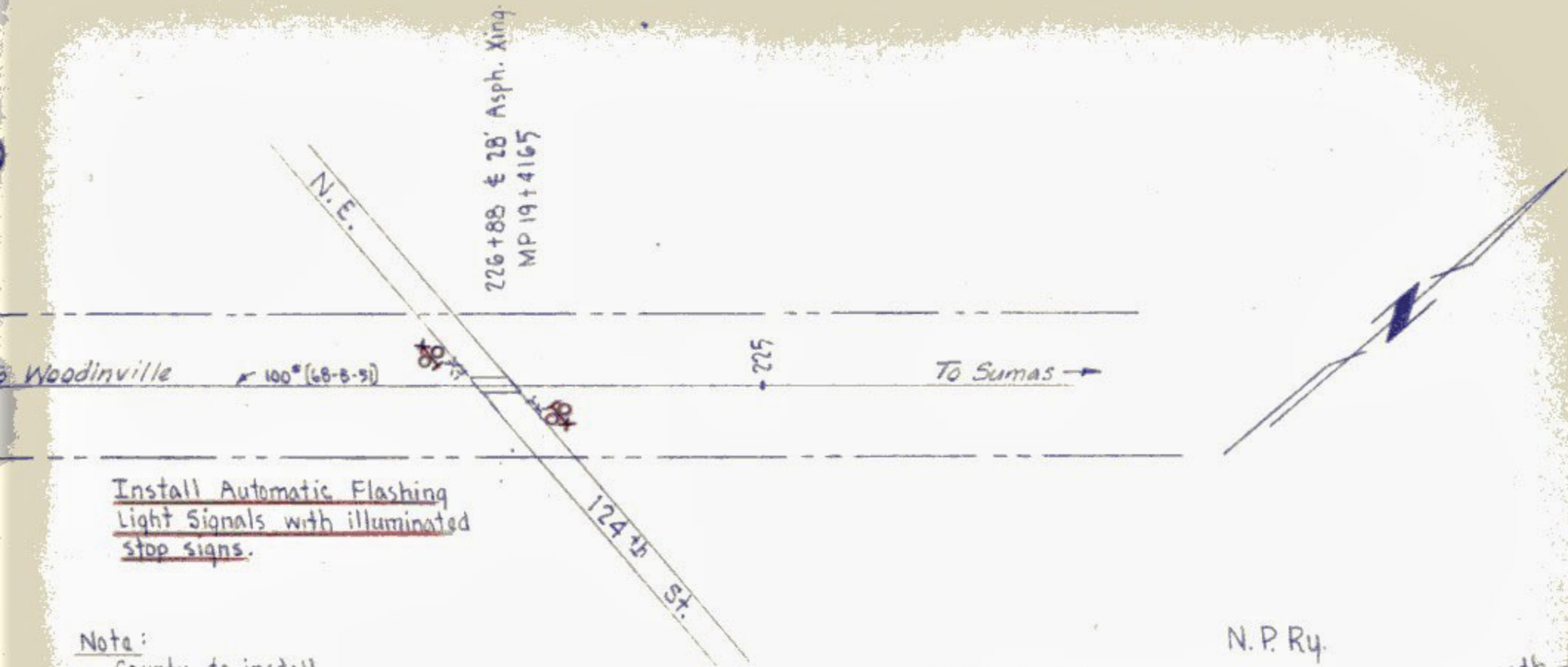
Signature and Title:

Valuation Engineer

Date August 2, 19 65

APPROVED:

*A. G. Henderson*



Install Automatic Flashing  
Light Signals with illuminated  
stop signs.

Note:  
County to install  
Advance Warning Signs

N.P. Ry. 11th sub  
Tacoma Div.  
Automatic Crossing Signals on N.E. 124th St.  
MP-19+4165 near Kirkland, Wash.  
Scale 1" = 100'

Office Chief Engr. St. Paul, Minn. July 27, 1965

Proposed Work shown         
Removals "       

Val. Sec. Wash. 8A